



Electric winch model RPE

Capacity 250 - 1000 kg

Winches series RPE and RPA are designed explicitly for performance, efficiency and safety and offer many advantages and options. RPE's and RPA's extremely compact, practical cube design and universal rope lead-offs allow individual applications in almost any position and make them powerful aids for lifting and pulling loads.

The winches are designed to DIN 15020, classification 1 Bm/M3, safety regulation DGUV Vorschrift 52 (BGVD8) and, of course, the EC machinery directives.

Every winch is factory tested with overload.

The units are supplied with a test certificate showing the unit's serial-no. and an operating instructions manual which contains a manufacturer's declaration.

Features

- Compact dimensions due to internal brake motor.
- Voltage 400 V/230 V, 3-phase, 50 Hz, protected to IP 54, insulation class F.
- Adjustable slip clutch to protect the winch from overloading standard for model RPE 10-6.
- Spur gear transmission with helical first gear ensures smooth motion. Lubricated by grease and can, therefore, be used in any position.
- Spring pressure disc brake incorporated in the motor holds the load secure even in the event of a power failure.
- Plain rope drum standard.
- The rope is secured to the drum in a recess so that the rope can be wound onto the drum in several layers without damage.
- Direct control or 42 V low voltage control (incl. push-button with emergency-stop and 2 m control cable).



Rope attachment



Spring pressure disc brake



Brake motor

INFO

When selecting the length of the rope please bear in mind that a minimum of 2-3 windings have to remain on the drum.

Yale hoists and trolleys are not designed for passenger elevation applications and must not be used for this purpose.

Options

- Different drum designs, e.g. extended to accommodate longer rope, machined grooves for exact reeling, with separation web and 2nd rope outlet for working with two ropes.
- Geared limit switches to limit rope motion in both directions (in combination with 42 V low voltage control).
- Single-phase A.C. motor 230 V, 50 Hz, 42 V low voltage control.
- Slack rope switch to automatically stop the winch when rope tension eases e.g. when the load touches down (only in combination with low voltage control).
- Frequency converter for stepless speed control.
- Adjustable slip clutch to protect the winch from overloading for models RPE 2-13, RPE 5-6 and RPE 5-12.
- Special design according to DGUV Vorschrift 17 (BGVC1) for theater stage applications available.
- Radio remote control
- Other operating voltages
- Stainless brake



INFO

Special design for wind energy as well as customised constructions on request!

Also available as zinc-plated version on request!



Single-phase A.C. motor



Geared limit switches



Gearbox with slip clutch



Different drum designs



Technical data model RPE

| Model | EAN-No. 4025092* | Capacity | Lifting speed 1 st layer | Lifting speed top layer | Rope diameter | Motor | ED | Useable rope length 1 st layer | Useable rope length top layer | Weight without rope |
|-----------------------|---------------------|----------|---|-------------------------------|------------------|-------|----|---|-------------------------------------|---------------------------|
| | | kg | m/min | m/min | mm | kW | % | m | m | kg |
| RPE 2-13 | *071796 | 250 | 10.2 | 13.2 | 4 | 0.55 | 40 | 11.2 | 54.5 | 31.8 |
| RPE 5-6 | *071857 | 500 | 4.6 | 6.6 | 6 | 0.55 | 40 | 7.0 | 38.8 | 32.8 |
| RPE 5-12 | *071918 | 500 | 8.7 | 12.6 | 6 | 1.1 | 40 | 11.0 | 55.4 | 41.0 |
| RPE 9-6 | *071956 | 990 | 5.1 | 6.5 | 8 | 1.1 | 40 | 10.2 | 37.4 | 76.0 |
| RPE 10-6 ¹ | *072014 | 1000 | 5.1 | 6.5 | 8 | 1.1 | 40 | 10.2 | 37.4 | 76.9 |

¹ With slip clutch

Plain drum (longer useable rope length)

| Model | Capacity top layer kg | Drum size | Useable rope length max. m |
|-----------------|-----------------------------|-----------|----------------------------------|
| RPE 2-13 L | 250 | 2 | 80 |
| RPE 5-6 L | 500 | 2 | 58 |
| RPE 9-6/10-6 L | 990/1000 | 2 | 56 |
| RPE 2-13 XL | 250 | 3 | 200 |
| RPE 5-6 XL | 500 | 3 | 140 |
| RPE 5-12 XL | 500 | 3 | 140 |
| RPE 9-6/10-6 XL | 990/1000 | 3 | 100 |

Grooved drum (recommended for single layer operation)

| Model | Capacity top layer kg | Drum size | Useable rope length 1 st layer m | Useable rope length max. m |
|------------------|-----------------------------|-----------|---|----------------------------------|
| RPE 2-13 R | 250 | 1 | 8.8 | 43 |
| RPE 5-6 R | 500 | 1 | 6.2 | 33 |
| RPE 9-6/10-6 R | 990/1000 | 1 | 8.2 | 30 |
| RPE 2-13 LR | 250 | 2 | 13.3 | 64 |
| RPE 5-6 LR | 500 | 2 | 9.5 | 49 |
| RPE 5-12 LR | 500 | 2 | 9.5 | 49 |
| RPE 9-6/10-6 LR | 990/1000 | 2 | 12.9 | 47 |
| RPE 2-13 XLR | 250 | 3 | 35.3 | 165 |
| RPE 5-6 XLR | 500 | 3 | 25.7 | 128 |
| RPE 5-12 XLR | 500 | 3 | 25.7 | 128 |
| RPE 9-6/10-6 XLR | 990/1000 | 3 | 25.2 | 89 |



INFO

When selecting the length of the rope please bear in mind that a minimum of 2-3 windings have to remain on the drum.

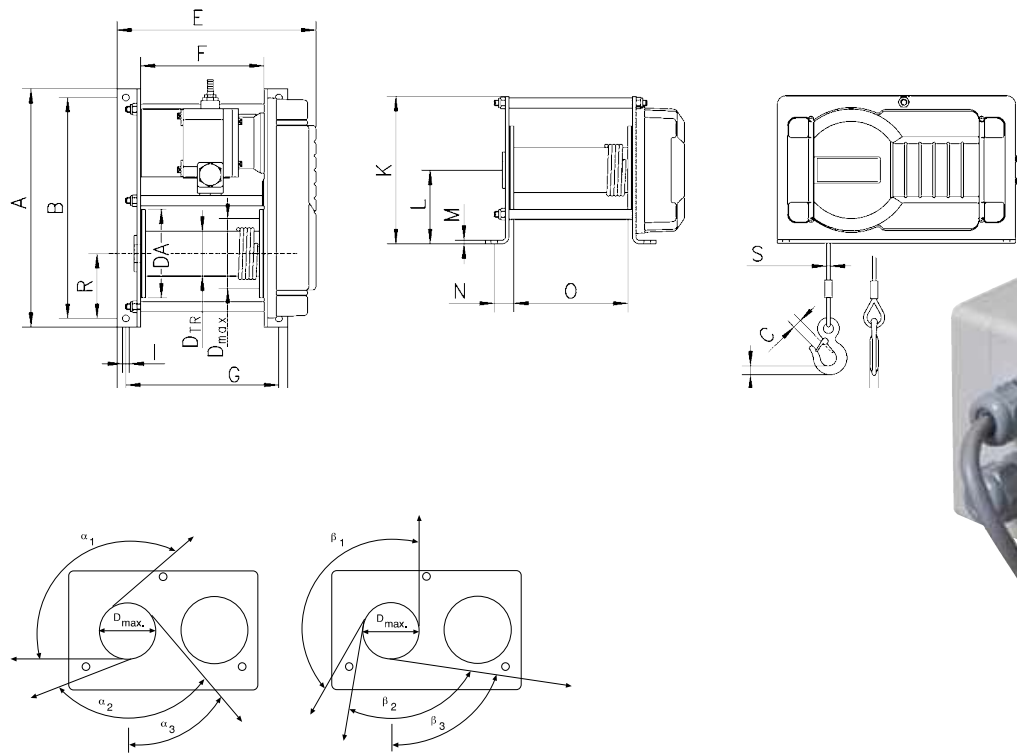
Yale hoists and trolleys are not designed for passenger elevation applications and must not be used for this purpose.

Winches with drums for longer useable rope lengths have partly other dimensions than those shown on page 95.

Dimensions model RPE (400V direct control, standard drum)

| Model | RPE 2-13 | RPE 5-6 | RPE 5-12 | RPE 9-6 | RPE 10-6 |
|--------------------|----------|---------|----------|---------|----------|
| A, mm | 405 | 405 | 405 | 525 | 525 |
| B, mm | 375 | 375 | 375 | 485 | 485 |
| C, mm | 18 | 18 | 18 | 25 | 25 |
| DTR, mm | 76 | 76 | 76 | 108 | 108 |
| Dmax, mm | 104 | 118 | 118 | 148 | 148 |
| DA, mm | 150 | 150 | 150 | 180 | 180 |
| E, mm | 338 | 338 | 428 | 450 | 450 |
| F, mm | 210 | 210 | 300 | 270 | 270 |
| G, mm | 260 | 260 | 350 | 345 | 345 |
| H, mm | 290 | 290 | 380 | 380 | 380 |
| I, mm | 11 | 11 | 11 | 13 | 13 |
| K, mm | 250 | 250 | 250 | 340 | 340 |
| L, mm | 125 | 125 | 125 | 170 | 170 |
| M, mm | 6 | 6 | 6 | 10 | 10 |
| N, mm | 33 | 33 | 33 | 47.5 | 47.5 |
| O, mm | 194 | 194 | 284 | 250 | 250 |
| P, mm | 19 | 19 | 19 | 24 | 24 |
| Q, mm | 13 | 13 | 13 | 19 | 19 |
| R, mm | 125 | 125 | 125 | 170 | 170 |
| S, mm | 4 | 6 | 6 | 8 | 8 |
| $\alpha 1, ^\circ$ | 130 | 130 | 130 | 145 | 145 |
| $\alpha 2, ^\circ$ | 110 | 110 | 110 | 125 | 125 |
| $\alpha 3, ^\circ$ | 40 | 40 | 40 | 50 | 50 |
| $\beta 1, ^\circ$ | 150 | 150 | 150 | 155 | 155 |
| $\beta 2, ^\circ$ | 90 | 90 | 90 | 100 | 100 |
| $\beta 3, ^\circ$ | 80 | 80 | 80 | 83 | 83 |

Dimensions for s with optional features are available on request!



Rope lead-offs for electric winch RPE